

PEMC Series

DC Molded Case
Circuit Breaker



PROJOY

electric

– Switch To Safety! –

PROJOY

electric

– Switch To Safety! –



HIGH CRAFTSMANSHIP AND HIGH STANDARDS

Bright and Eye-catching

In line with the working habits of firefighters, it is conducive to quickly locate the operating location.



Small
Volume



Short circuit
Protection



Overload
Protection



Flame
Retardant



High Breaking
Capability



Arcing
Short



Complete
Accessories



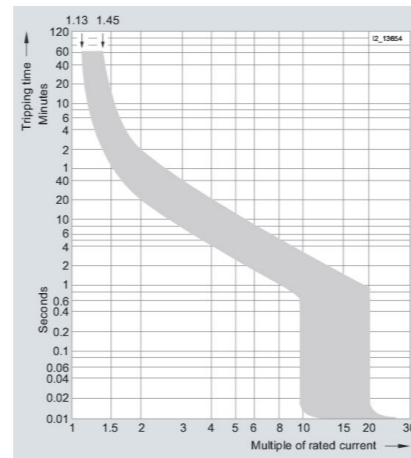
Multiple
Wiring

Technical data

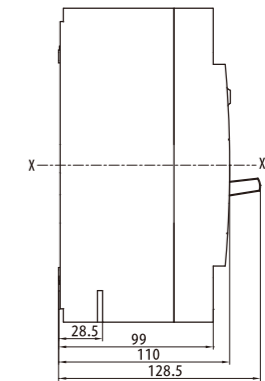
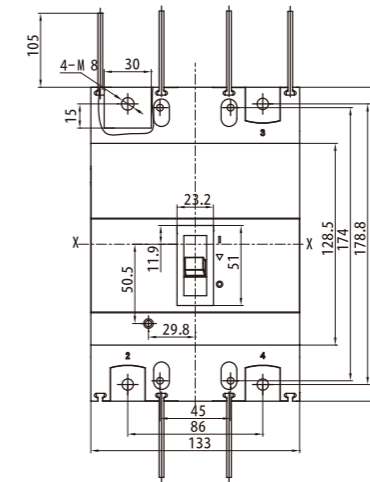
Standard	EN60947-2, AS/NZS IEC 60947. 2:2015.					
Type	PEMCX-Y					
Shell frame current INM (A)	250		400		630	
Rated current In (A)	125/140/160/180/200/225/250			315/350/400	500/630	
Number of poles	2P	2P	3P	4P	4P	
Rated Operating Voltage UE (v)	DC500V	DC1000V	DC1500V	DC1500V	DC1500V	
Rated working voltage Ue(V)	1000	1250	1500	1500	1500	
Rated impulse voltage Uimp(kV)	8	8	12	12	12	
Power frequency withstand voltage 1min(V)	3820	3820	3820	3820	3820	
Rated impulse voltage UIMP (kV)	20	20	20	20	20	
Rated Operating Short Circuit Breaking Capability ICS (Ka)	10	20	20	20	20	
Arc Distance (mm)	≤50	≤50	≤50	≤100	≤100	
Tional POperaerformance (times)	Electrical Life	2,000	2,000	2,000	2,000	
	Mechanical Life	10,000	10,000	10,000	10,000	
Isolation function		■	■	■	■	
Types of accessories	Shunt release	<input type="checkbox"/>	<input type="checkbox"/>	<input type="checkbox"/>	<input type="checkbox"/>	
	Alarm contact	<input type="checkbox"/>	<input type="checkbox"/>	<input type="checkbox"/>	<input type="checkbox"/>	
	Auxiliary contact	<input type="checkbox"/>	<input type="checkbox"/>	<input type="checkbox"/>	<input type="checkbox"/>	
Service temperature	The ambient air temperature is 40°C, the relative humidity of the atmosphere does not exceed 50% and the maximum relative humidity does not exceed 90% at 20°C					
Altitude	-25°C~+70°C, the average value within 24h does not exceed +35°C (above +40°C needs derating, and below -25°C needs custom LC low temperature products) ≤2000m (over 2000m needs derating to use)					
Class of use	A					
Protection level	IP20					
Pollution level	3					
INTERPHASE spacer	■					
	W	70	75	133	198	240
	H	145	190	200	257	270
	D	108	108	109	108	120
Certification	TUV, CE, CB, SAA					

■ Have □ Optional--none

Tripping Characteristics

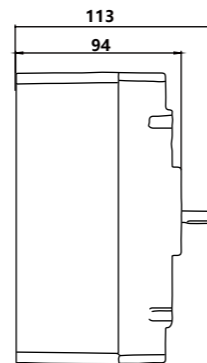
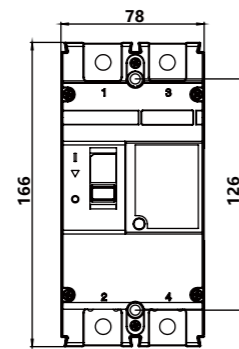


PEMC150-250/3P

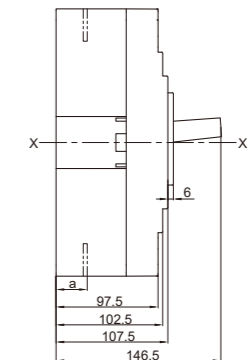
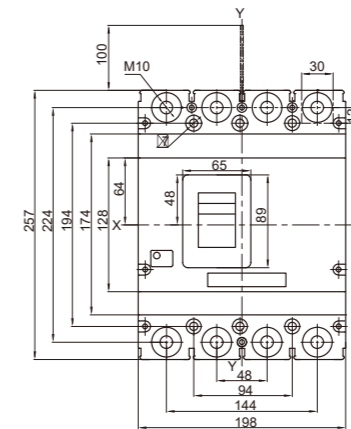


Dimensions

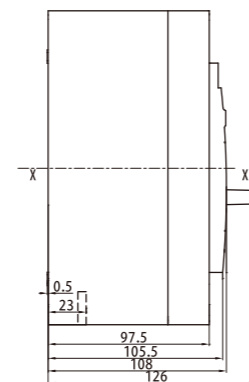
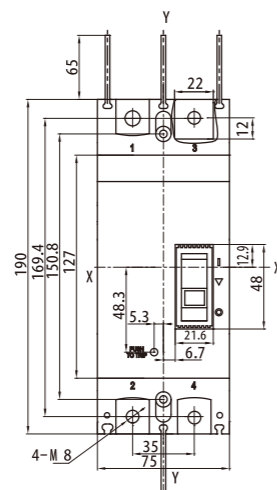
PEMC50-250/2P



PEMC150-400/4P



PEMC10-250/2P



PEMC150-630/4P

